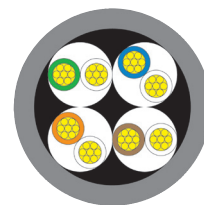
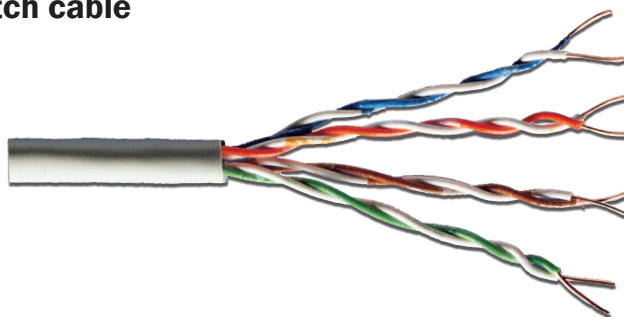


## DIGITUS® CAT 6 U-UTP twisted pair patch cable

4x2xAWG24 U-UTP CAT 6 250 MHz patch cable  
 Suitable for direct assembly of RJ45 plugs for the manufacture of patch cables.  
 For installation of cable lines of class E, 250 MHz.  
 Conforming to ISO/IEC 11801, DIN EN 50173, DIN EN 50288-6-2



Physical Description	
Basic Conductor	solid AWG 24/7, bare annealed copper
Insulation	PE
Total number of insulated conductors	8, twisted in 4 pairs
Color code	blue x white, orange x white, green x white, brown x white
Individual pair shield	none
Overall shield	Aluminium foil, providing 100% coverage, foil face out
Outer jacket	PVC
Color	grey

Electrical Properties	
DC loop resistance	≤ 175.2Ω/ km
Resistance unbalance	≤ 2%
Insulation resistance (500 V)	≥ 2000MΩ *km
Capacitance at 800 Hz	nom. 48 nF/km
Capacitance unbalance (pair to ground)	≤ 1500 pF/km
Characteristic impedance (1-100 MHz)	(100 ± 15) Ω
Nominal velocity of propagation	approx. 67 %
Propagation delay	Nominal ≤ 535 ns/100m
Delay skew	Nominal ≤ 45 ns/100m
Test voltage (DC, 1 min) Core/Core	1000 V
Coupling attenuation	≥ 40 dB

Transmission Properties								
FREQ.	Absorbability	NEXT	PS NEXT	ACR-N	PS-ACR-N	ACR-F	PS ACR-F	Return loss
MHz	dB/100m	dB	dB	dB/100m	dB/100m	dB/100m	dB/100m	dB
	Typ	Typ	Typ	Typ	Typ	Typ	Typ	Typ
1	3	65,0	62,0	62,0	59,0	63,3	60,3	
4	4	63,0	60,5	59,0	56,5	51,2	48,2	19,0
8	5,7	58,2	55,6	52,5	49,9	45,2	42,2	19,0
10	6,3	56,6	54,0	50,2	47,7	43,3	40,3	19,0
16	8	53,2	50,6	45,2	42,6	39,2	36,2	18,0
20	9	21,6	49,0	42,6	39,9	37,2	34,2	17,5
25	10,1	50,0	47,3	39,9	37,2	35,3	32,3	17,0
31,25	11,4	48,4	45,7	37,0	34,3	33,4	30,4	16,5
62,5	16,5	43,4	40,6	26,9	24,1	27,3	24,3	14,0
100	21,3	39,9	37,1	48,6	15,8	23,3	20,3	12,0
200	31,5	34,8	31,9	3,3	0,3	17,2	14,2	9,0
250	35,9	33,1	30,2	-2,8	-5,8	15,3	12,3	8,0

**131755 / DK-1611-P-1**  
 100m ring, CAT 6 U-UTP Twisted Pair Patch Cable

**131762 / DK-1611-P-305**  
 305m ring, CAT 6 U-UTP Twisted Pair Patch Cable

